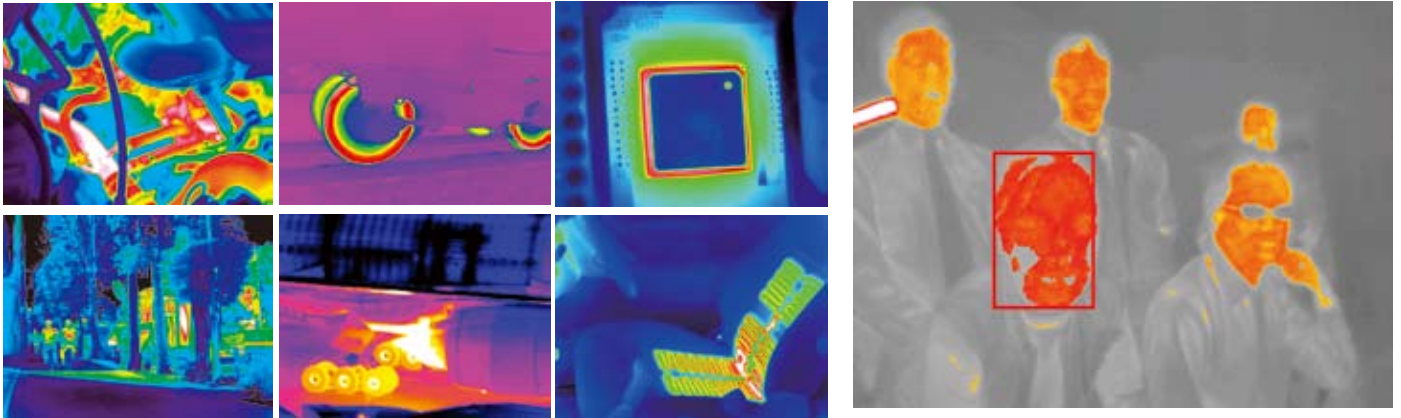


Thermal Infrared Camera

ARTRAY Thermo Camera series is equipped with USB2.0/Ethernet interface that transfers 14 bit high speed raw data collected by microbolometer directly.



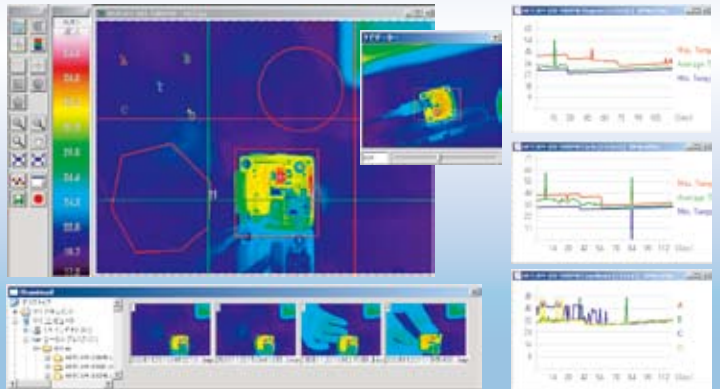
VGA Size

USB2.0

ARTCAM-640-THERMO-WOM



ART-THERMO Viewer software



- OS : Windows XP / VISTA / 7 / 8
- CPU : Avobe 2.8GHz

QVGA Size Ethernet USB2.0

ARTCAM-320-THERMO-WOM



LAN Interface Available
ARTCAM-320-THERMO-LAN3

150~1200°C
ARTCAM-320-THERMO-H1200

High Temperature Range Type

ARTCAM-640-THERMO-WOM

Resolution : VGA 640(H)x480(V)
Field of View : f=50mm: 17°(H)x13°(V) (Option)
Dimension : 82(W)x85.5(H)x120.5(D)mm

ARTCAM-320-THERMO-WOM

Resolution : QVGA 320(H)x240(V)
Field of View : f=8mm: 50°(H)x37°(V)
Dimension : 72(W)x61.7(H)x115.8(D)mm

Common specification

Sensor : Uncooled Microbolometer(Built in peltier device)
Frame Rate : 60fps(USB) / 30fps(Ethernet)
Pixel Pitch : 23.5 μm
Output : 14bit digital output
Interface : USB2.0 Bulk transferred streaming output
Power Supply : DC12V/1A
Turning Temperature : 0~35°C Below80%(No condensing)
Temperature Accuracy : Max value of either ±5% or ±5°C of readings.
Dynamic Range : L Range: -40~150°C, H Range: 0~540°C
Attached Items : Device driver, Viewer software, AC adapter, USB/LAN cable
Options : Software development kit(SDK)
IR Lens (Germanium):
*ARTCAM-640-THERMO f=15mm, 50mm, 100mm
*ARTCAM-320-THERMO f=16mm, 25mm, 35mm, 75mm, 100mm
Ultra wide lens 70°, 90°, 120°



ARTRAY CO., LTD.

Ueno Bldg. 1-17-5 Kouenjikota Suginami-Ku Tokyo
166-0002, Japan
TEL : +81-3-3389-5488 FAX : +81-3-3389-5486
Email : sales@artray.us URL : www.artray.us

• ARTCAM is ARTRAY's registered trademark.
• We might change product's specifications without announcement.
• Sorry for inconvenience in advance.

TUV100 01 0310

ARTRAY
www.artray.co.jp